

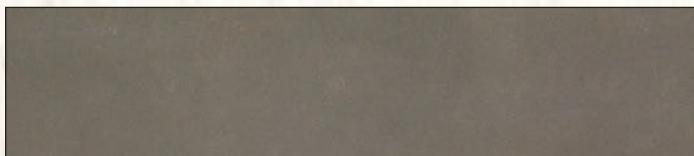
# Materialübersicht Keramik (alphabetisch sortiert)



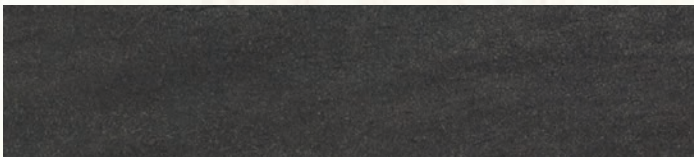
924 Arctic White



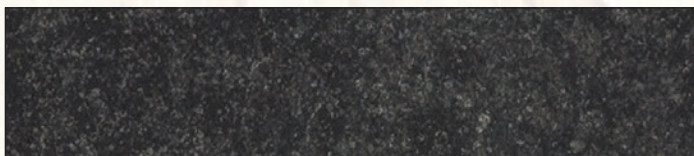
901 Avorio



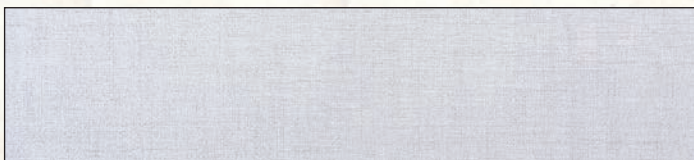
902 Barro



904 Basaltblack



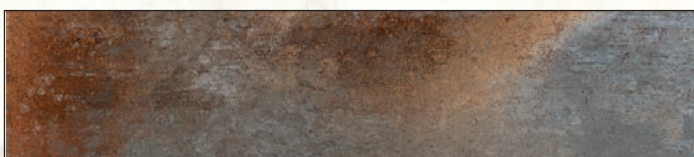
906 Belgian Blue Dark



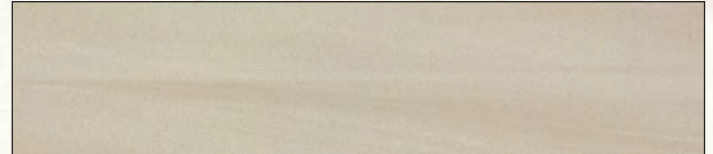
908 Carbono White



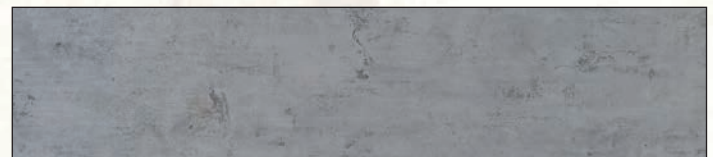
927 Humo



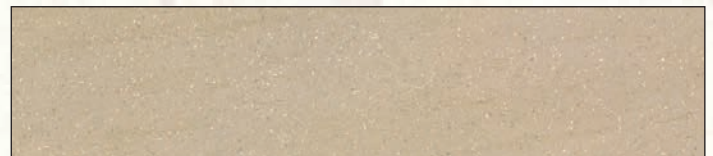
928 Iron Ash



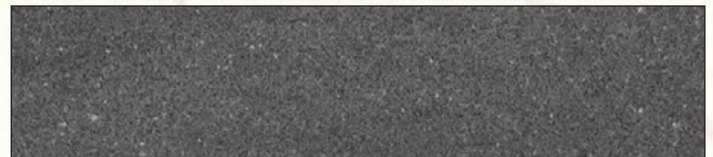
925 Arena



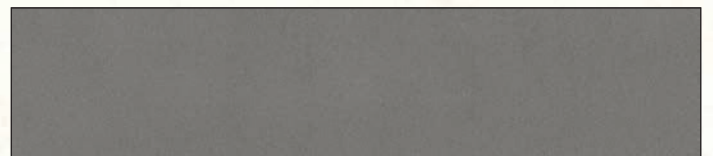
926 Beton



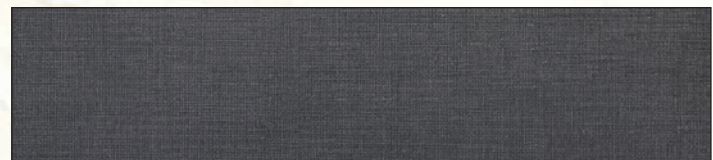
903 Basaltbeige



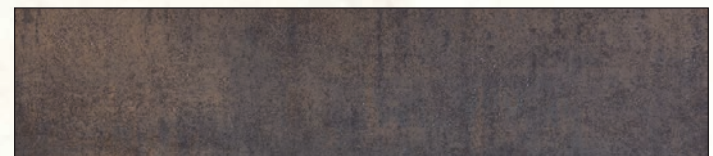
905 Basaltgrey



909 Cement



907 Carbono Black

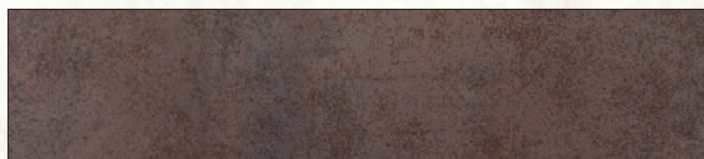


914 Iron Moss

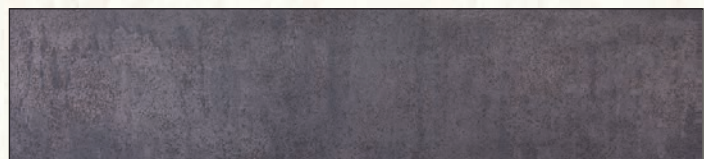


929 Iron Blue

## Materialübersicht Keramik (alphabetisch sortiert)



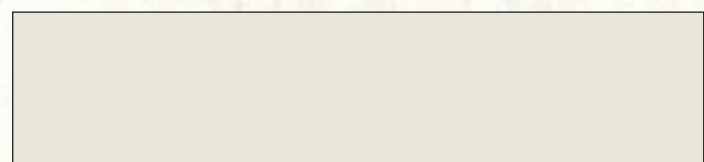
911 Iron Copper



913 Iron Grey



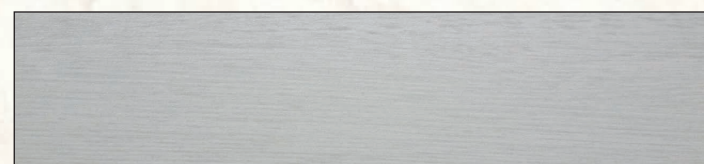
916 Nero



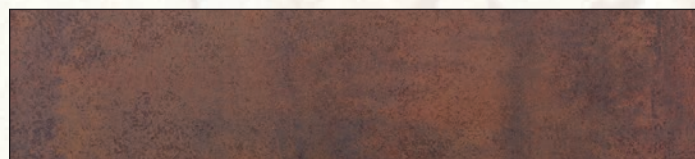
917 Nieve



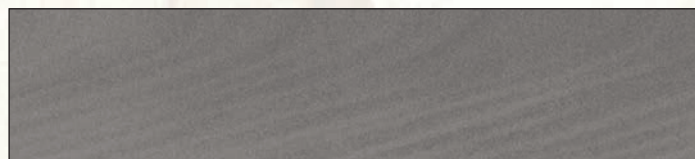
933 Pietra di Luna



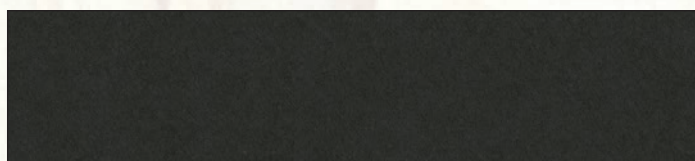
921 Holzoptik Weiß



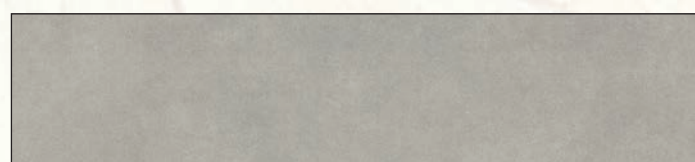
912 Iron Corten



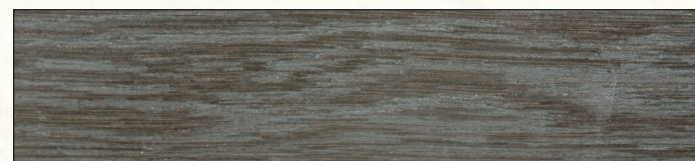
930 Lava



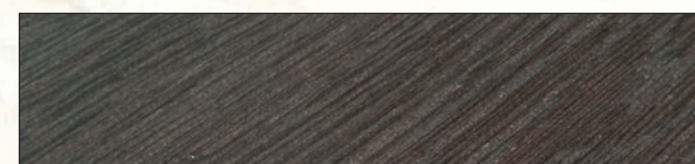
931 Nero Zimbabwe



932 Phedra



922 Holzoptik Braun



920 Holzoptik Schwarz

### Hinweise zu Mustern:

Keramikmuster sowie -abbildungen sind unverbindlich!

Sie zeigen nur den allgemeinen Charakter und können niemals alle Unterschiede und Eigenschaften in Zeichnung, Farbe und Struktur in sich vereinen.

### Durchschnittliche Gewichtsangaben zu Keramik:

| Stärke der Keramik |        | Einheit |                  |
|--------------------|--------|---------|------------------|
| in 6mm Stärke      | ca. 15 | Kg      | / m <sup>2</sup> |
| in 12mm Stärke     | ca. 30 | Kg      | / m <sup>2</sup> |